

MEETINGS &
CONFERENCES



SQUAW VALLEY
ALPINE MEADOWS



EXPERIENCE THE SOUL OF THE MOUNTAINS.
BE WELCOMED BY A LEGENDARY VALLEY. FIND
NEW INSPIRATION AMIDST CENTURY-OLD
TREES AND STUNNING GRANITE MOUNTAIN
PEAKS. THE SQUAW VALLEY | ALPINE MEADOWS
EXPERIENCE...THIS IS WHAT AWAITS YOU
WHEN YOU BOOK YOUR NEXT MEETING OR
CONFERENCE.



THE DESTINATION

Squaw Valley | Alpine Meadows resort is a year-round destination located just a 45-minute scenic drive from the Reno-Tahoe International Airport and ten minutes from the crystal blue waters of Lake Tahoe. When meetings wrap up, guests can explore a myriad of recreational opportunities, high altitude adventure and networking in a relaxed setting.



THE VILLAGE

Stay within walking distance of Squaw Valley meeting rooms, ski lifts, Aerial Tram, restaurants, boutiques, and year-round events and festivals. Guests can explore the resort's vibrant restaurants, lively bars, pubs, art galleries and unique shops. The Village also boasts a full-service day spa and yoga studio.





ACTIVITIES

Whether it's group activities or team-building, anyone can embark on their ideal adventure at Squaw Valley | Alpine Meadows. From the slopes to The Village, the resort is an exciting mecca for both outdoor enthusiasts and for those looking to simply relax. Squaw Valley | Alpine Meadows offers Lake Tahoe's best terrain choices for skiers and snowboarders of all abilities. World-class bike trails and mountain biking are nearby and High Camp, elevation 8200', accessed via the Aerial Tram, offers mountaintop hiking, swimming, skating and sightseeing in addition to dining.



WINTER

Skiing and Snowboarding
Ice Skating at High Camp
Squaw Valley's Olympic Museum at High Camp
Mountaintop Hot Tub at High Camp (in the Spring)
Scenic Aerial Tram Rides
Snowtubing at SnoVentures
Yoga at the Wanderlust Yoga Studio
Shopping
Dining
S'mores by the Firepits
Ski & Snowboard Lessons
Private Mountain Guides

SUMMER

Hiking
Biking
Scenic Aerial Tram Rides
Mountaintop Pool and Hot Tub at High Camp
Roller Skating at High Camp
Olympic Museum at High Camp
Geocaching at High Camp
Tennis at High Camp
Ropes Course
Golf
Dining
Shopping





The Village at Squaw Valley offers slopeside condominium suites located above the meeting spaces, shops and restaurants. Available in one, two and three-bedroom options, every suite features a stone hearth fireplace, full kitchen, living room, flat screen TV and private balcony. The Village recently received \$1.2 million in room upgrades.



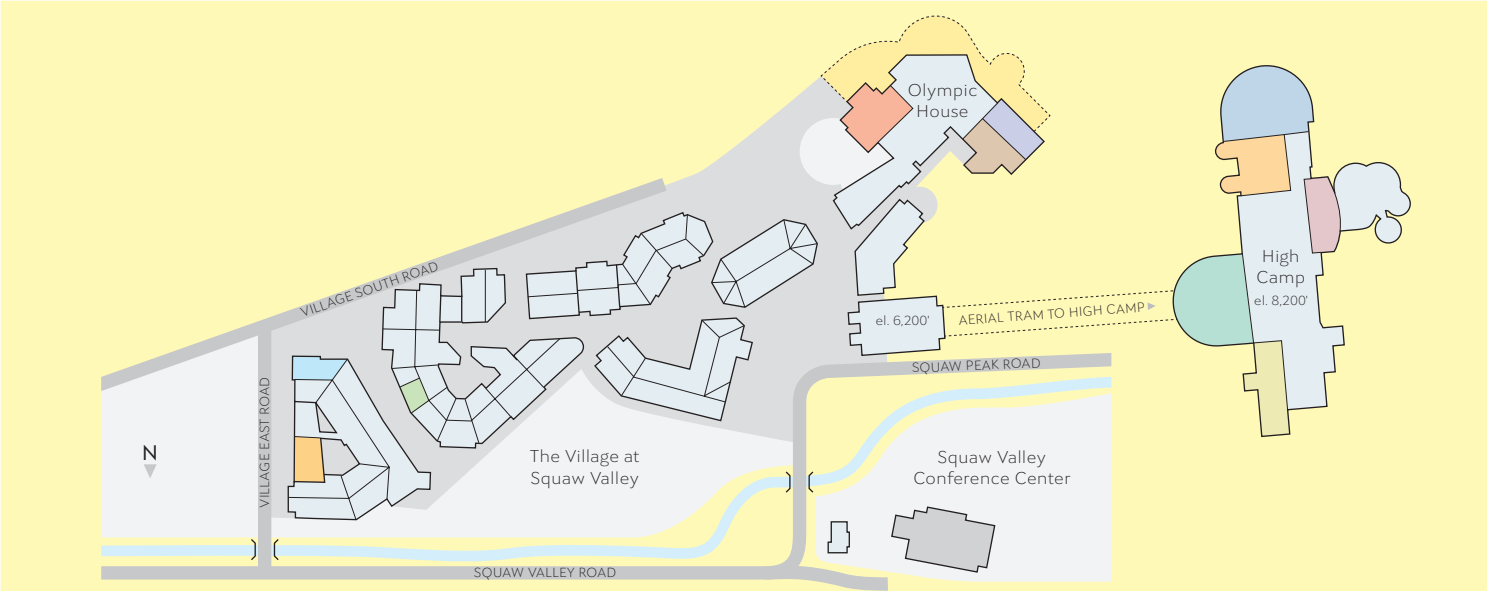
THE MEETING SPACES AND AMENITIES

Just steps away from the legendary slopes of Squaw Valley resort, The Village at Squaw Valley features 40,000 square feet of customizable indoor and outdoor meeting space. Over \$1 million has been invested in meeting space upgrades, improvements and expansion. Choose from a variety of venues including spacious meeting rooms, some with breathtaking views of Lake Tahoe and the surrounding Sierra Nevada mountains.

Squaw Valley's Executive Chef and culinary team take pride in designing creative dining experiences for memorable group gatherings. Choose from a variety of set menus or be inspired by our selection of themed options including farm-to-table, international cuisine or local sustainable. We also offer pairing parties featuring local breweries, California wines or whiskey tastings.



MAP



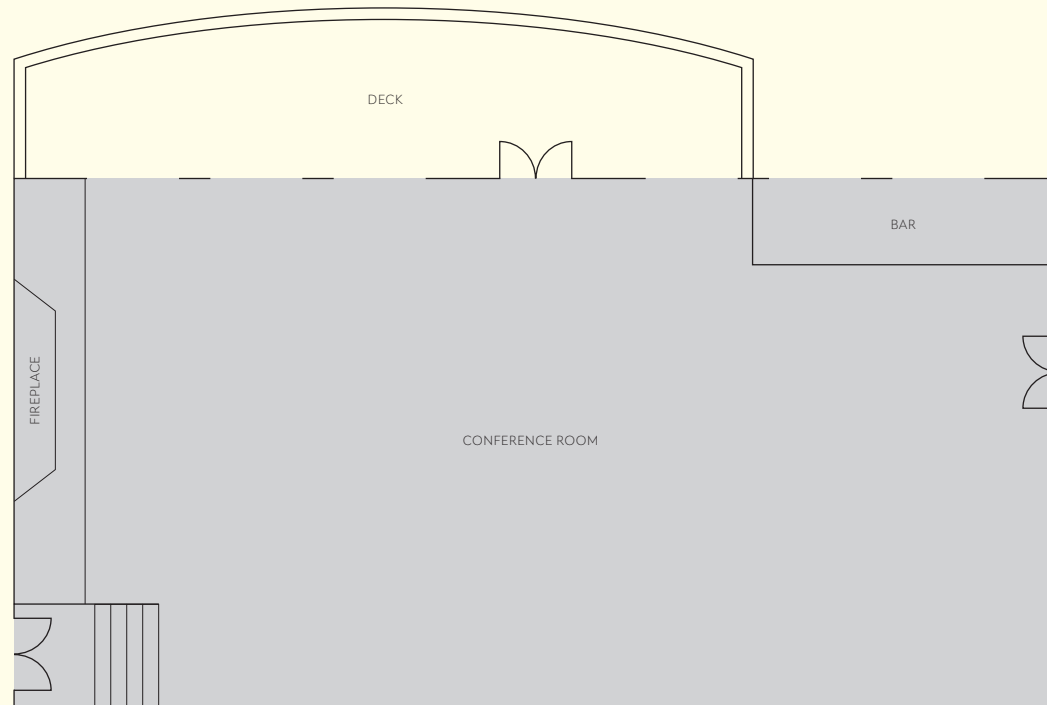
MEETING
SPACE
CAPACITIES

ROOM	SQ FEET	DIMENSIONS	CLASSROOM	CHEVRON CLASSROOM	U SHAPE	HOLLOW SQUARE	BOARDROOM	THEATER	ROUNDS (10)	RECEPTION
SQUAW VALLEY CONFERENCE CENTER										
Conference Room	5006	105'x54'	300	300	96	108/84	90	500	360	450
THE VILLAGE AT SQUAW VALLEY										
Palisades	2930	55'x55'	156	144	39	60	42	288	190	200
Palisades A	1366	25'x55'	84	72	39	60	42	144	100	x
Palisades B	765	28'x28'	48	36	27	36	22	72	40	x
Palisades C	738	28'x28'	48	36	27	36	22	72	40	x
Palisades B & C	1467	28'x55'	84	72	39	60	42	144	100	x
Mountain Stream	1913	unique	x	x	x	x	x	x	120	175
Mountain Stream A	404	unique	18	18	15	24	12	40	30	x
Mountain Stream B	800	unique	45	33	15	42	24	88	60	x
Mountain Stream C	709	unique	42	27	18	36	18	66	50	x
Mountain Stream A & B	1204	unique	x	x	15	x	x	x	80	x
Mountain Stream B & C	1509	unique	x	4x	15	x	48	57	90	x
Alpenglow	1063	39'x29'	45	45	18	42	28	100	80	125
OLYMPIC HOUSE										
Plaza Bar	3456	unique	x	x	x	x	x	x	120	200
O-Lounge	1819	unique	30	24	15	18	18	30	70	125
Bar One	2456	unique	x	x	x	x	x	x	100	200
Sun Deck	2503	unique	x	x	x	x	x	x	400	
HIGH CAMP										
The Terrace	7702	unique	x	x	x	x	x	x	220*	220
Alexander's	3819	unique	x	x	x	x	x	x	50*	100
Poolside Café	1280	unique	x	x	x	x	x	x	30*	x
Bar North	1450	unique	x	x	x	x	x	x	40*	x
Olympic Museum	2640	unique	x	x	x	x	x	x	80*	120

*Banquet seating only. Size of tables variable by venue.

SQUAW VALLEY CONFERENCE CENTER

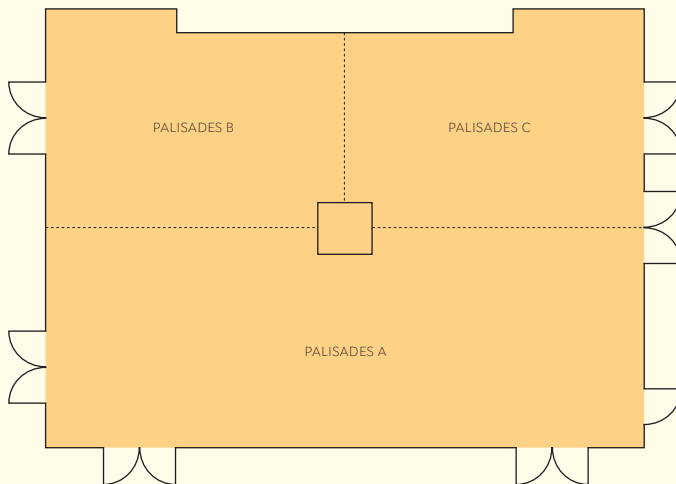
The original gathering spot for the 1960 Winter Olympic competitors, the Squaw Valley Conference Center is a unique historic site featuring vaulted ceilings, a river rock bar and a grand fireplace. The beautifully landscaped gardens and deck as well as the conference room with floor to ceiling windows offer one of the most breathtaking views in the valley. Receptions, small trade shows, meal functions and presentations are always memorable when hosted in this venue.



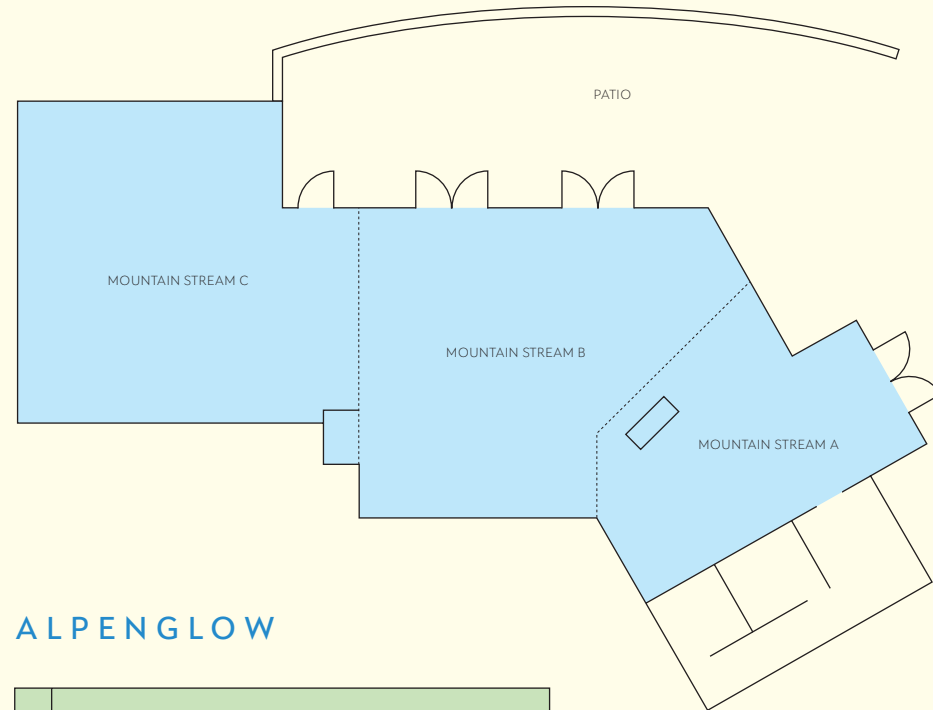
THE VILLAGE AT SQUAW VALLEY

The Village at Squaw Valley offers three meeting rooms conveniently located just steps from your accommodations. The Palisades Room provides groups with a meeting space that features three break-out options. The Mountain Stream room and deck overlooks a meandering brook and is highlighted by sweeping views of Squaw Valley's legendary terrain. The Alpenglow Room is a traditional meeting space perfectly suited for small retreats or may be set as an executive boardroom.

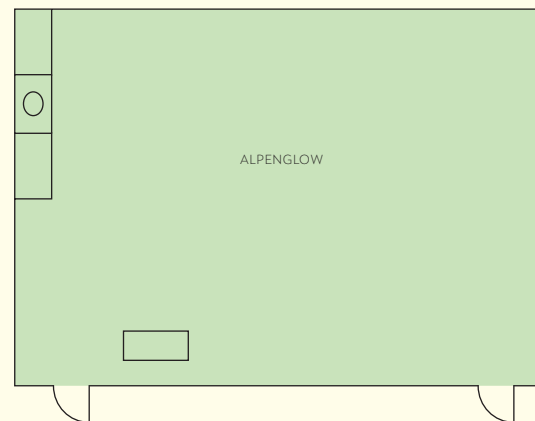
PALISADES



MOUNTAIN STREAM



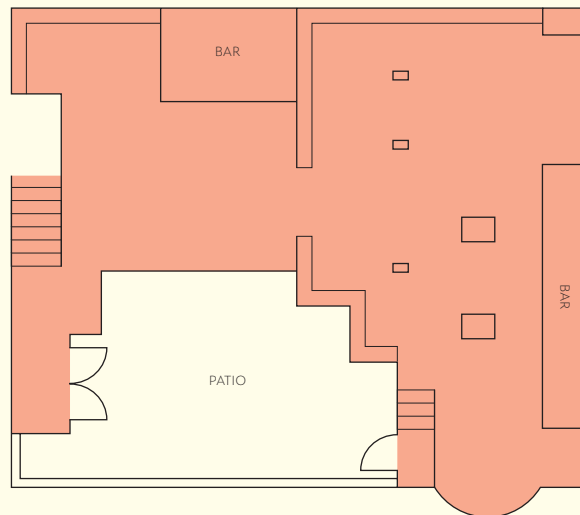
ALPENGLOW



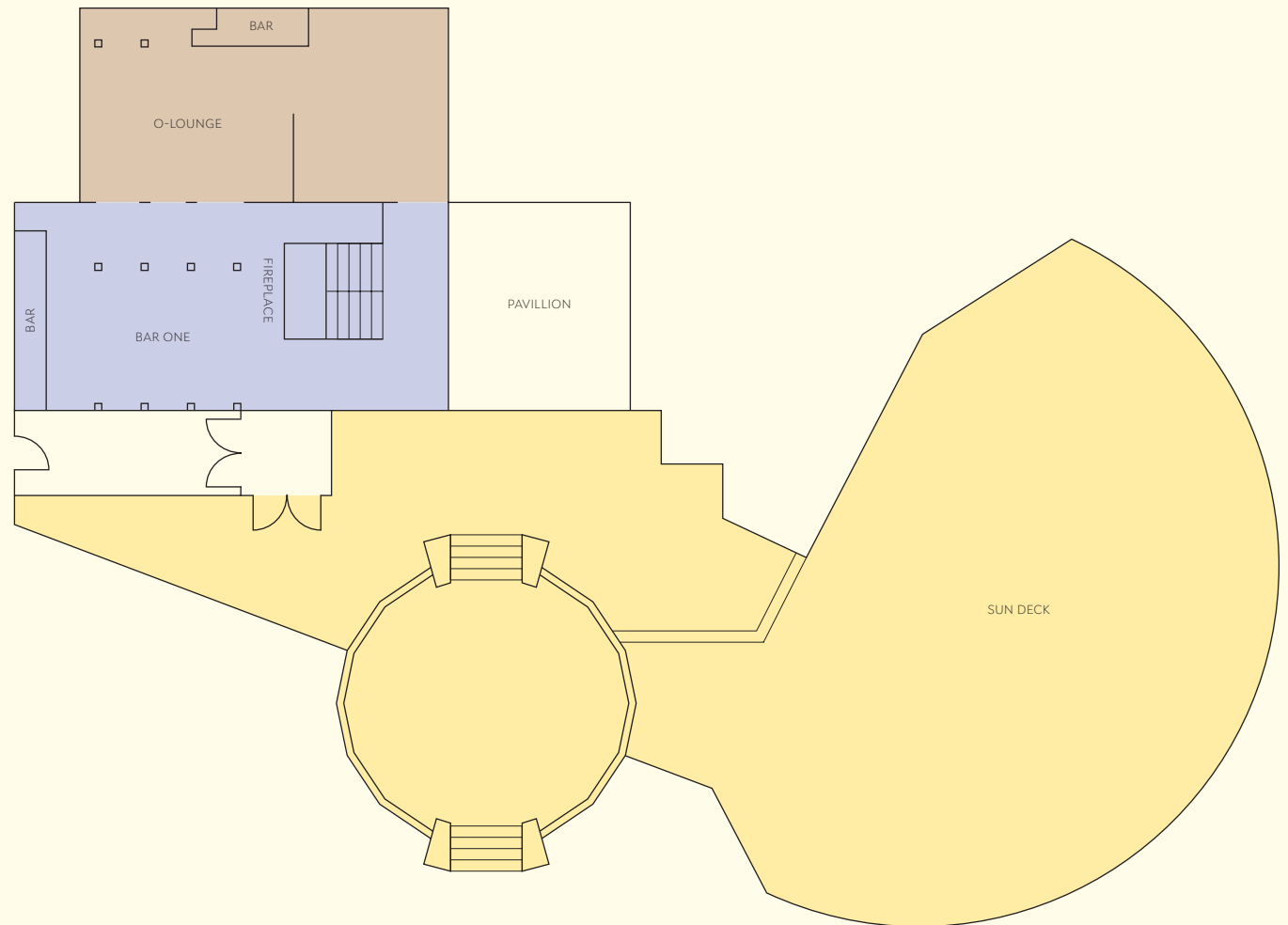
OLYMPIC HOUSE

In the heart of the Village, the recently remodeled Olympic House provides a variety of settings and spaces to choose from. A modern take on the mountain gathering, it is an ideal venue for dining and socializing. The O-Lounge is a more traditional space and the relaxed ambiance of the Plaza Bar and Bar One are contemporary spaces with striking views.

PLAZA BAR



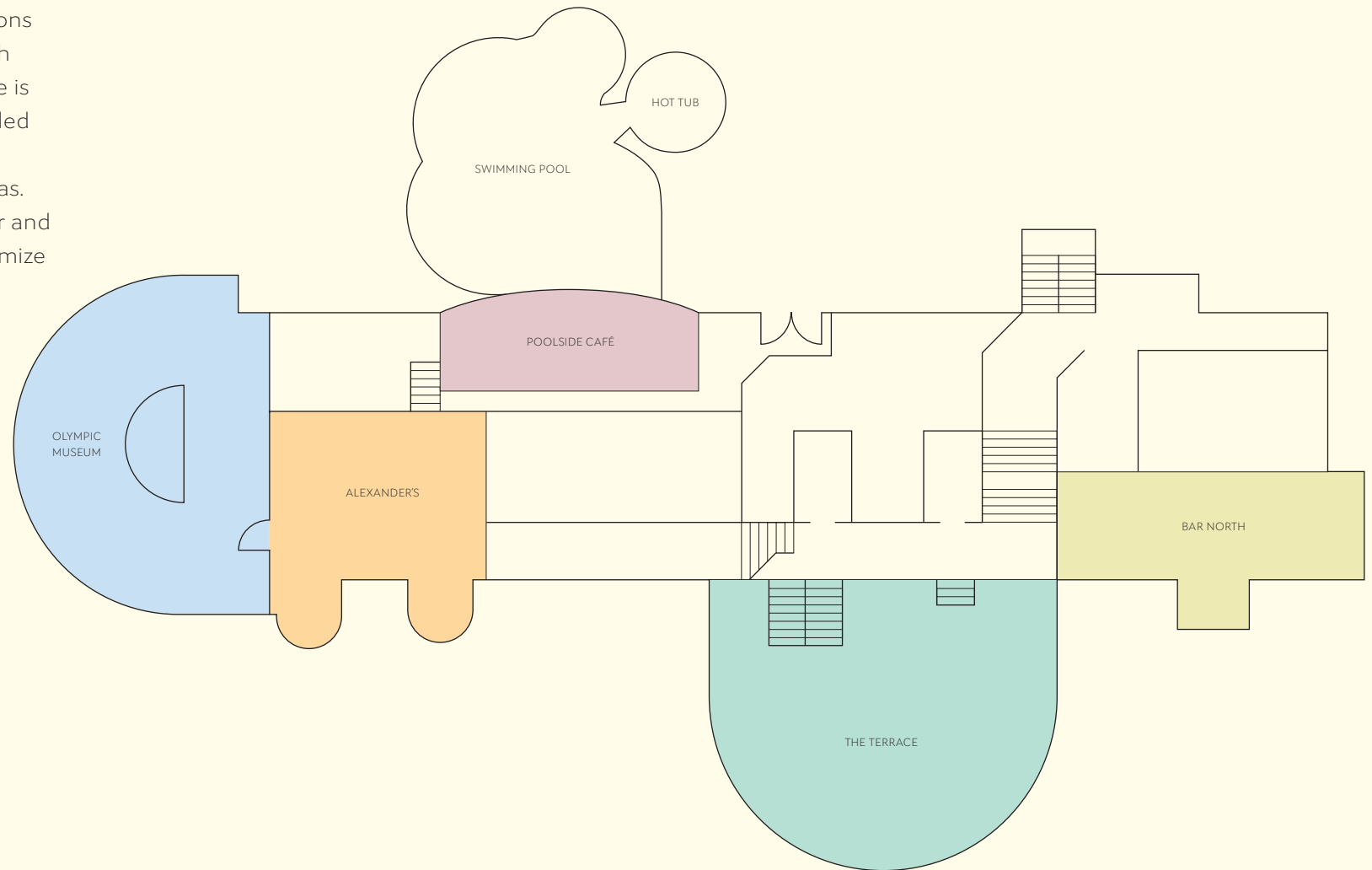
O-LOUNGE | BAR ONE | SUN DECK



HIGH CAMP

Ride the scenic Aerial Tram up 2,000 vertical feet over amazing valleys, creeks and granite rock formations to Squaw Valley's legendary High Camp. This one-of-a-kind venue is located at elevation 8,200', nestled beneath Sierra Nevada peaks with panoramic Lake Tahoe vistas. Choose from a variety of indoor and outdoor locations all set to maximize the surrounding views. Create a memorable experience by hosting an event in the newly remodeled Olympic Museum, a unique sun-filled room paying tribute to Squaw Valley's celebrated Olympic heritage.

THE TERRACE | ALEXANDER'S | POOLSIDE CAFÉ | BAR NORTH



GETTING HERE

AIRPORTS

Reno/Tahoe International: 45 Miles

Sacramento International: 114 Miles

San Francisco International: 204 Miles

TRAVEL BY CAR

Take I-80 to the 185 exit which is 45 miles west of Reno and 114 miles east of Sacramento. Take Hwy 89 south to the Squaw Valley entrance (seven miles) or the Alpine Meadows entrance (nine miles).



CONTACT

Squaw Valley | Alpine Meadows
Group Sales Team
866-368-1357
sales@squawalpine.com



SQUAW VALLEY
ALPINE MEADOWS

squawalpine.com