



GRANLIBAKKEN
CONFERENCE CENTER & LODGE
LAKE TAHOE

TRANSPORTATION

Welcome to our special corner of Lake Tahoe

Granlibakken offers accommodations in a tranquil mountain setting with all the wonders of the High Sierra at your doorstep. Whether you arrive by car or plane, getting here is easy.

From Sacramento/Reno (Interstate 80)

From Interstate 80, take Exit 185 to Highway 89 south from Truckee to the "Y" in Tahoe City (approximately 14 miles or 20 minutes). Follow Highway 89 south for 1/2 mile to Granlibakken Road. Turn right and continue for 3/4 of a mile to the entrance of the main lodge and registration.

From Central California

Drive to Sacramento and Interstate 80 east. Follow above directions from Sacramento.

From Southern California (Highway 395)

Follow Highway 395 to Highway 50 west in Carson City. Turn right on Highway 28 along the east and north shores of Lake Tahoe to Tahoe City (approximately 28 miles or 45 minutes). Turn left at the stop light and continue 1/2 mile on Highway 89 to Granlibakken Road. Turn right and continue for 3/4 of a mile to the entrance of the main lodge and registration.

From Reno/Tahoe International Airport

Take Highway 395 north from the airport, then exit to Interstate 80 west toward Truckee. Follow the directions for Interstate 80.

We offer airport shuttle service to and from the Reno/Tahoe International Airport through the North Lake Tahoe Express. Guests wishing to book the shuttle should call us at 800-543-3221.



RECREATION

Unlimited recreational activities

Step outside your door and enjoy the area's scenic beauty or ask your conference coordinator to assist you with a recreation itinerary customized for your group.

Tahoe Adventure Learning

This action-oriented adventure program will provide a catalyst for improved teamwork within your organization. The ropes course is nestled among the pines and offers a series of progressively attainable challenges, allowing your team to gain confidence, better communication and an increased level of trust.

Winter Recreation

Snow play, including skiing, snowboarding, cross-country skiing and snowshoeing, are available on-site. World-class ski resorts, including Squaw Valley USA and Alpine Meadows, are a short distance away. Ask your conference coordinator to arrange for lift tickets, lessons, rentals and shuttle service at any of our Tahoe ski resorts.

Summer Recreation

On-site, you'll find secluded hiking/biking trails, tennis courts, swimming pool and par-course. World-class golf, biking trails and water play adventures, including rafting, kayaking, paddleboarding and more, can be arranged at nearby locations. Ask your conference coordinator for assistance.

On-site Amenities

The swimming pool, sauna and hot tub are open year-round for your enjoyment.



DINING

Diverse Menus

Granlibakken offers superb cuisine to satisfy every palate. In addition to providing meeting and event planners with tailored menus, our friendly and professional staff will see to it that everyone is served efficiently and on-schedule. No matter the make-up of your group, our conference coordinators are dedicated to making your plans a grand success. From special events to holiday menus and dinner cruises on Lake Tahoe, to river rafting picnics and ski barbeque lunches, Granlibakken can accommodate your requests.

Granlibakken's full American plan offers maximum flexibility and a daily variety of items. Breakfast and lunch are served buffet style; for dinner, choose from buffet or banquet service.

Our executive chef, Ron Eber, has been serving Granlibakken guests for over 25 years with his sumptuous menus.

Breakfast Buffet

Granlibakken's buffet style breakfast is famous for homemade bread pudding, quiche Lorraine, cheese blintzes and a complete assortment of breads, pastries and cereals. Entrees include omelettes and scrambled or poached eggs accompanied by homefried potatoes, sausage, bacon, French toast and pancakes. Fresh seasonal fruits, yogurts, juices and French roast coffee round out this bountiful buffet.

Lunch & Dinner Buffets

All buffets include an assortment of prepared green salads, three entrees, including one vegetarian, and fresh vegetables.

We specialize in creating themes from Mexican fiestas with mariachi bands to western barbecues and can host your group indoors or outdoors, weather permitting.

Banquets

Granlibakken's banquet-style dinners are unlimited in scope. Start with our Moldavian tomato salad with feta cheese, a Caesar salad or special house salad.



Fresh salmon, halibut and mahi mahi are prepared regularly. Prime rib, beef tenderloin and New York steaks are among the many beef entrees offered. Creative poultry dishes like home-stuffed chicken breasts or Cornish game hens are other favorites. Vegetarian options are always available, including spinach roulade with red pepper coulis, eggplant moussaka and stuffed zucchini, just to name a few.

Our decadent desserts round out a dinner customized to your group's tastes.

LODGING

Bedrooms, Studios or Suites

Suites in the Main Lodge, Bearpaw and Deerwander can be used as separate rooms (studio or bedroom unit) or opened into a suite. Each self-contained room has its own bathroom, telephone with voicemail and wireless or wired internet access, television, DVD and coffee service.

Townhouses

Townhouse units at Granlibakken have one to three bedrooms, a living room/dining area, full kitchen and fireplace. Each bedroom has its own TV/DVD and telephone with voicemail and wireless or wired internet access. Units with lofts are available upon request.

All units have free wireless internet.



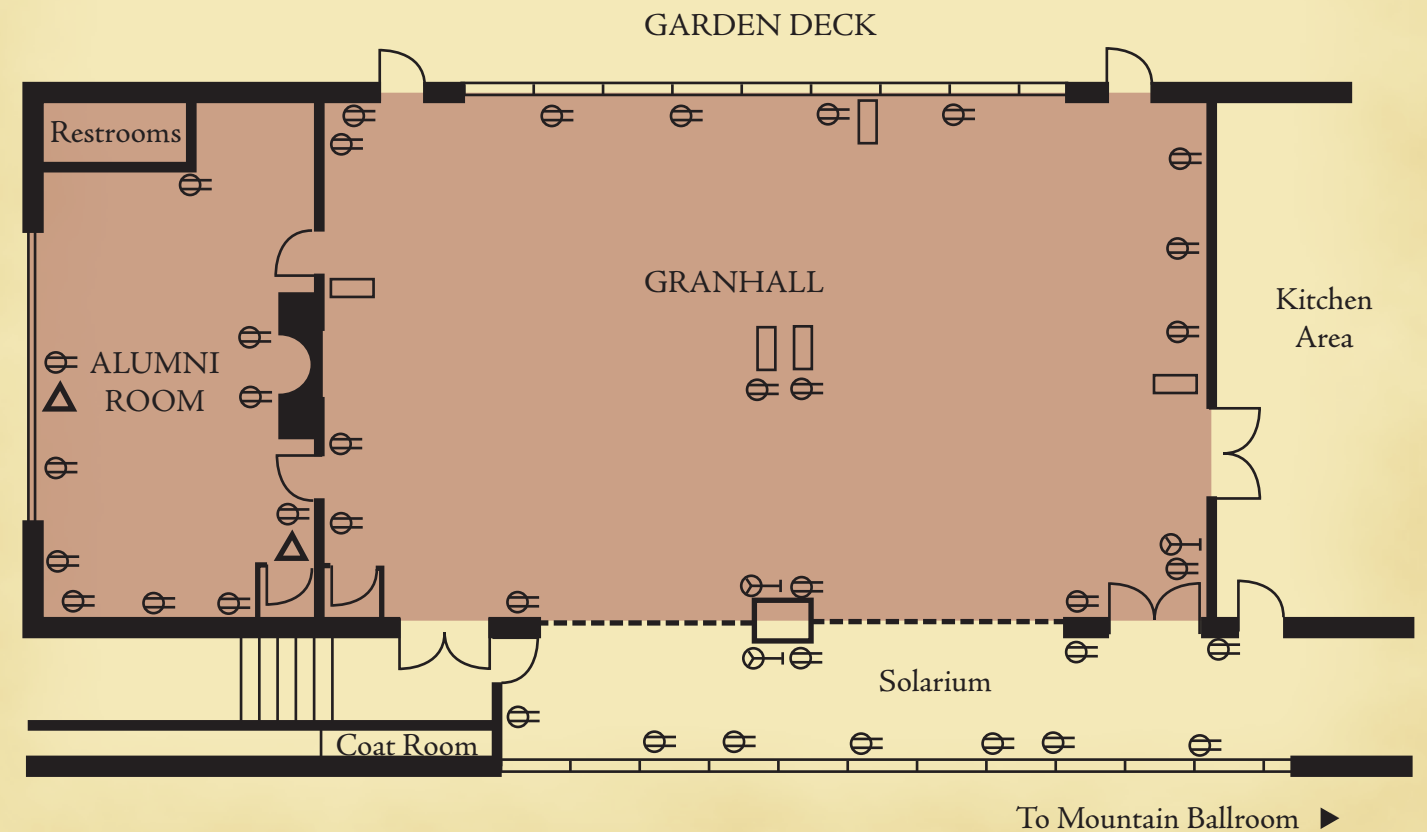
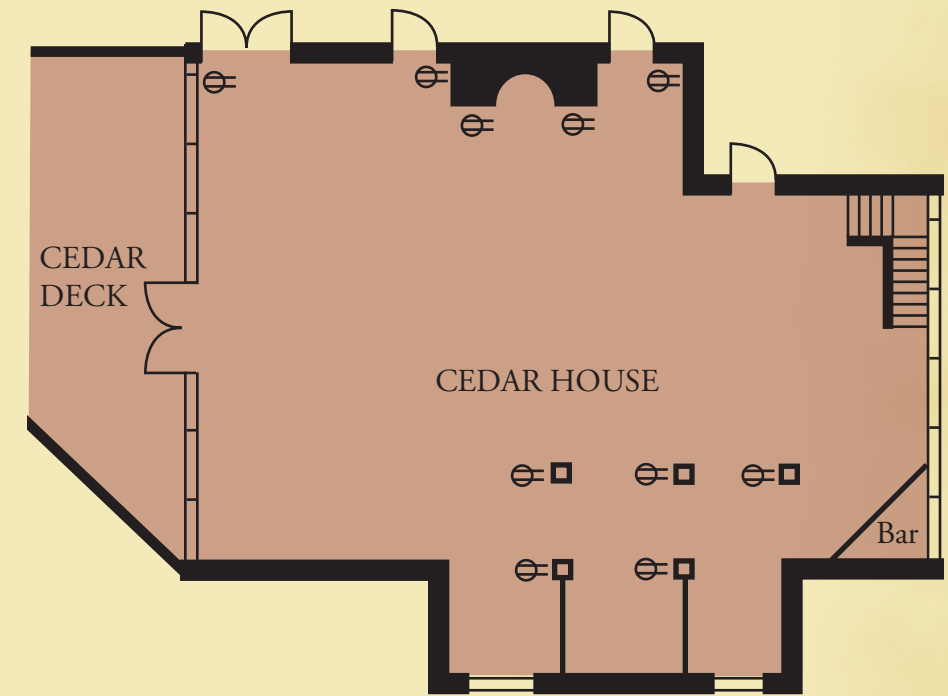


Cedar House

The Cedar House is an A-frame design with a massive stone fireplace. The room captures the majestic feeling of Tahoe. The Cedar House deck is ideal for cocktails and barbeques.

Granhall

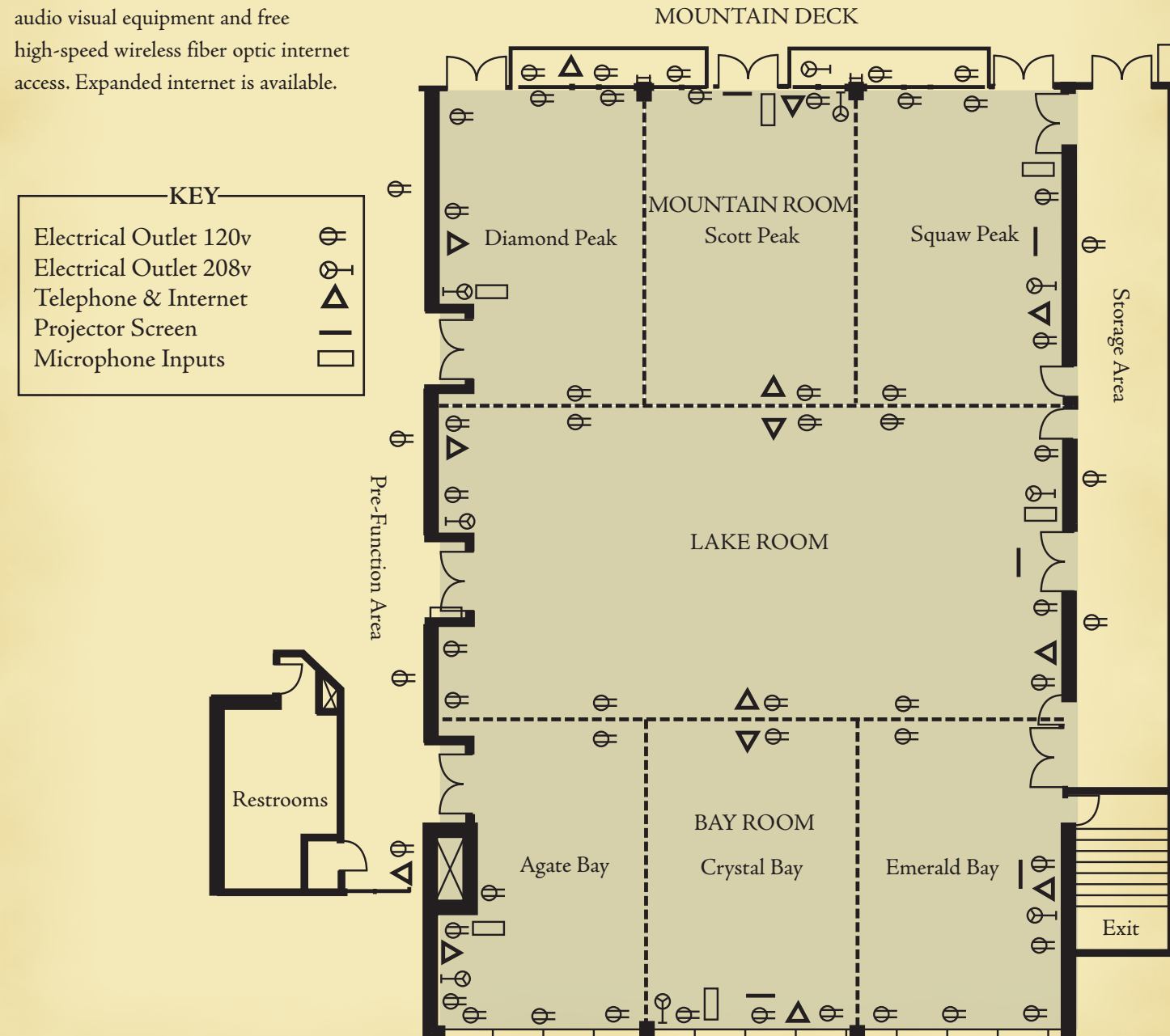
With a capacity for seating 250 people, Granhall is the heart of Granlibakken's banquet facilities. The rustic room features a fireplace and opens onto the patio and pine forest. The Alumni Room, adjacent to Granhall, is a perfect reception room or dining area for groups of 50 or less.



CONFERENCE & MEETING FACILITIES

Mountain Ballroom

The Mountain Ballroom provides seven conference rooms totaling 5,400 square feet, plus 1,600 square feet of pre-function area. The rooms offer state-of-the-art facilities including audio visual equipment and free high-speed wireless fiber optic internet access. Expanded internet is available.



CONFERENCE & MEETING FACILITIES

Granlibakken features 16 conference rooms, three large outdoor decks and state-of-the-art meeting facilities, all located within walking distance from lodging and dining facilities.

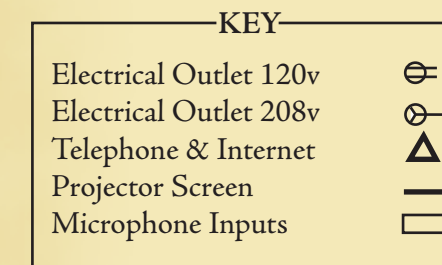
Conference Center

The Conference Center has dining, meeting and exhibit space of 16,000 square feet, with conference rooms accommodating groups from ten to 500 people.

Most audio visual equipment is included in Granlibakken's conference package price. Your conference coordinator can provide a current inventory of equipment.

Additional conference and lodging space are available in Granlibakken's Executive Lodge facility. See accompanying brochure.

Most facilities are handicapped accessible.

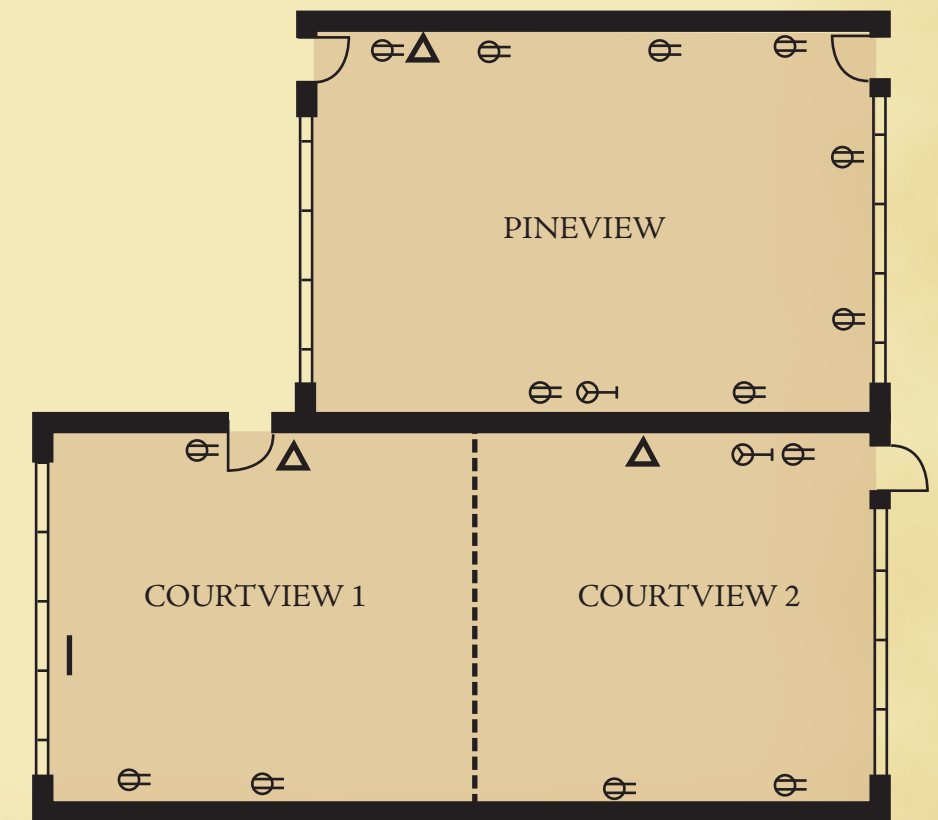


Courtview & Pineview

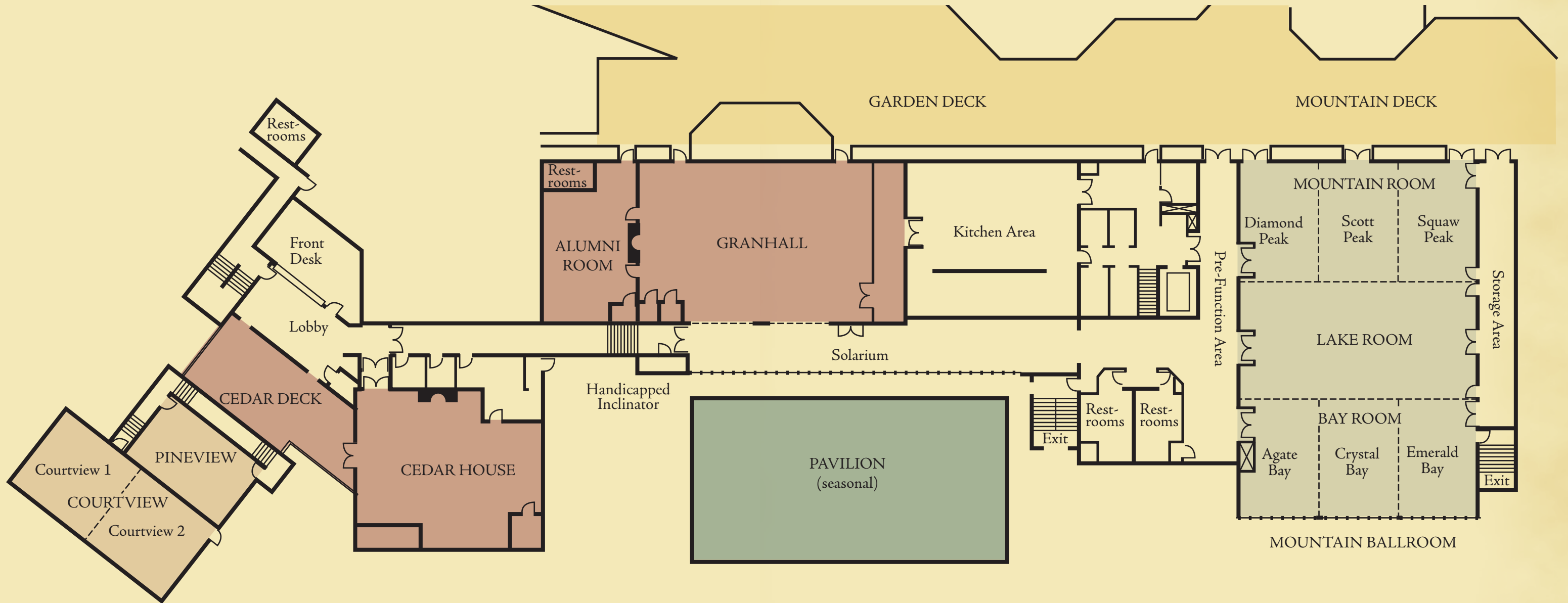
These rooms are located adjacent to the Main Lodge.

Courtview has a seating capacity of 80 people and overlooks the tennis courts at the base of the Granlibakken Valley. It can be divided into two separate rooms, each with its own private entrance.

Pineview has a seating capacity of 40 people and offers an intimate setting for small groups and breakout sessions.



MEETING ROOM DIAGRAM



| Meeting Rooms | Room Dimensions | | | Seating Capacity | | | |
|--------------------|-----------------|-------------|----------------|------------------|-----------|---------|-----------|
| | Size | Sq. Footage | Ceiling Height | Theatre | Classroom | Banquet | Reception |
| Granhall | 57 x 40 ft. | 2,982 | 9-14 ft. | 200 | 150 | 250 | 250 |
| Solarium | 54 x 13 ft. | 702 | sloping | - | - | 45 | 70 |
| Alumni Room | 20 x 30 ft. | 600 | 9-14 ft. | 50 | 32 | 40 | - |
| Cedar House | 45 x 25 ft. | 1,125 | A-frame | 100 | 75 | 100 | 100 |
| Courtview (open) | 48 x 22 ft. | 1,056 | 10-17 ft. | 80 | 60 | - | - |
| Courtview 1 | 24 x 22 ft. | 528 | 10-17 ft. | 40 | 32 | - | - |
| Courtview 2 | 24 x 22 ft. | 528 | 10-17 ft. | 40 | 32 | - | - |
| Pineview | 18 x 30 ft. | 540 | 10-17 ft. | 40 | 32 | - | - |
| Decks | | | | | | | |
| Garden & Mt. Decks | freeform | 7,000 | - | - | - | 450 | 700 |
| Cedar Deck | 30 x 60 ft. | 1,800 | - | - | - | 100 | 150 |

| Meeting Rooms | Room Dimensions | | | Seating Capacity | | | |
|--------------------------|-----------------|-------------|----------------|------------------|-----------|---------|-----------|
| | Size | Sq. Footage | Ceiling Height | Theatre | Classroom | Banquet | Reception |
| Mountain Ballroom (open) | 60 x 90 ft. | 5,400 | 12-16 ft. | 500 | 360 | 360 | 500 |
| Mountain Room | 60 x 30 ft. | 1,800 | 12-14 ft. | 180 | 120 | 120 | 180 |
| Diamond Peak | 20 x 30 ft. | 600 | 14 ft. | 50 | 32 | 32 | 50 |
| Scott Peak | 20 x 30 ft. | 600 | 14 ft. | 50 | 32 | 32 | 50 |
| Squaw Peak | 20 x 30 ft. | 600 | 14 ft. | 50 | 32 | 32 | 50 |
| Lake Room | 60 x 30 ft. | 1,800 | 12-14 ft. | 180 | 120 | 120 | 180 |
| Bay Room | 60 x 30 ft. | 1,800 | 12-14 ft. | 180 | 120 | 120 | 180 |
| Agate Bay | 20 x 30 ft. | 600 | 14 ft. | 50 | 32 | 32 | 50 |
| Crystal Bay | 20 x 30 ft. | 600 | 14 ft. | 50 | 32 | 32 | 50 |
| Emerald Bay | 20 x 30 ft. | 600 | 14 ft. | 50 | 32 | 32 | 50 |
| Pavilion (seasonal) | 40 x 80 ft. | 3200 | 16-20 ft. | 180 | 120 | 120 | 180 |

THE EXECUTIVE LODGE COMPLEX *at* GRANLIBAKKEN



Forest Lodge

Experience the elegant Forest Lodge. Named for the tranquil views from both lodging and meeting space, it creates a secluded, mountain-home ambiance for a board retreat or family reunion.

The Forest Lodge adds 1,600 square feet of meeting space and eight lodging rooms to the Executive Lodge Complex. Depending on the size of your group, it can be booked exclusively or in conjunction with other sections of the complex.

The 1,000-square-foot Alder Room features a gas fireplace, large plasma TV and leather living room furniture. French doors open to an expansive wrap-around deck. The room can seat 65 theatre-style and can also be configured for classroom, banquet or reception uses.

The Aspen room, with 640 square feet, seats 50, theatre-style. Windows on three sides and access to an outside patio provide a natural retreat setting.

Either meeting room can be set up for a private dinner or a specialty luncheon on the deck, with plated or buffet service.

Both the Alder and the Aspen offer:

- Built-in LCD projectors
- Direct wall plug-in for computers (to LCD)
- High Speed Internet connections
- Built-in sound systems with recording capability
- Built-in drop down screens
- All-electric window darkening shades



Executive Lodge

Planning a gathering for a group of up to 90? Our Executive Lodge Complex offers an exclusive retreat setting blending the warm woods, open beams and massive stone fireplace of a mountain lodge with meeting space, accommodations and professional service.

Set apart from the rest of our resort, the complex is private and flexible. From executive strategy sessions to seminars, weddings to board retreats, it was designed with a variety of uses in mind.





Put perfect menus on your agenda. The Executive Lodge Complex offers packages with meals included or private dining - prepared in the lodge's own gourmet kitchen.

Stay just steps away. Convenient accommodations within the complex offer all the comforts of home with the service of a resort. Lodging choices range from the seven-bedroom/seven-bath Big Pine Lodge, to the eight-bedroom/eight-bath Forest Lodge, to 30 adjacent guestrooms, including six suites.



The Executive Lodge Complex offers 45 guest rooms and four meeting rooms with a total of 3,160 square feet of meeting space, plus outdoor decks and manicured lawn to accommodate a range of group sizes and activities including weddings for up to 250.

The Big Pine Room, on the first floor, can be set in theater, classroom, banquet or reception configurations with 1,056 square feet of space.

The smaller Ponderosa Room, on the second floor, is well-suited to classroom and theater set-ups for trainings and seminars.

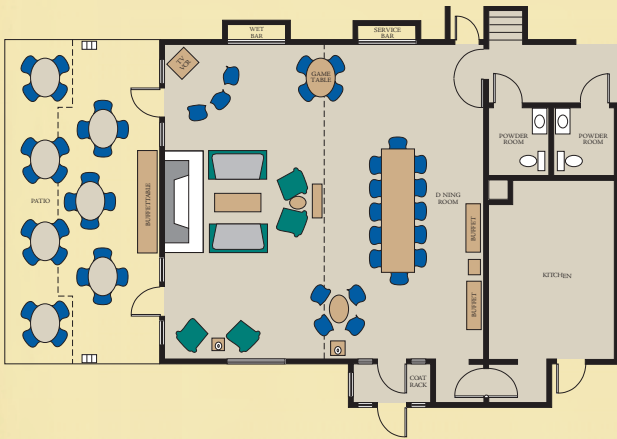
All Executive Lodge meeting spaces offer:

- Built-in audio/visual screens
- High speed internet access
- Views and direct access to the outdoors (or forest)
- Flexible meeting space

Need more specifics on everything the Executive Lodge Complex has to offer? See the floorplans and descriptions on the back of this brochure. And to meet the unique requirements of your group, contact our Conference Sales Managers at 800-552-4494 or conference@granlibakken.com for a custom proposal.



Big Pine Room



This 32' x 33' meeting/dining space is reminiscent of the great room of an Old-Tahoe lodge, with all-wood interior, open beam architecture, massive stone fireplace and furnishings that invite a fireside chat.

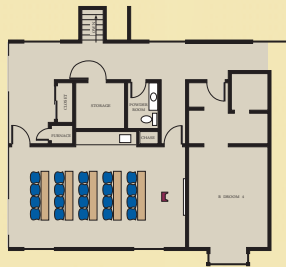
Total Square Feet: 1,056

Ceiling Height: 10'-16'

Seating Options/Capacities: Theater, 75

Classroom, 60 ♦ Banquet, 50 ♦ Reception, 75

Ponderosa Room



Views of the pines frame this 16' x 29' area, ideally suited to smaller meetings, seminars and trainings.

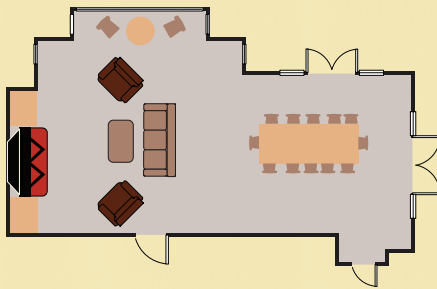
Total Square Feet: 464

Ceiling Height: 9'

Seating Options/Capacities:

Theater, 45 ♦ Classroom, 30

Alder Room



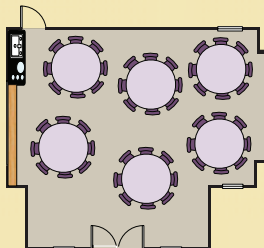
Total Square Feet: 1,000

Ceiling Height: 20'

Seating Options/Capacities:

Classroom, 50 ♦ Theater, 65 ♦ Banquet, 50 ♦ Reception, 75

Aspen Room



Total Square Feet: 640

Ceiling Height: 12'

Seating Options/Capacities:

Classroom, 30 ♦ Theater, 50 ♦ Banquet, 40 ♦ Reception, 60

GRANLIBAKKEN

CONFERENCE CENTER & LODGE

LAKE TAHOE

Sales: 800-552-4494 • Phone: 530-583-4242 • Fax: 530-581-7550

P.O. Box 6329 • Tahoe City, CA 96145 • E-mail: conference@granlibakken.com • Website: Granlibakken.com

 <http://www.facebook.com/Granlibakken>

 http://twitter.com/Granlibakken_CA